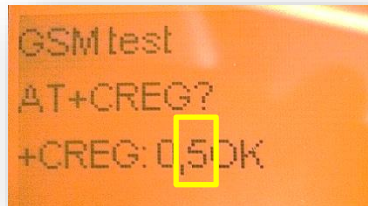


# GSM TEST

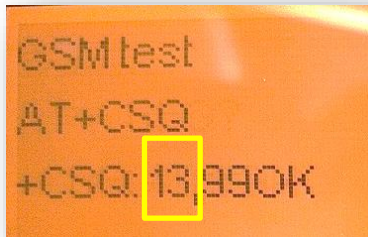
Scroll down to “**Cimel**” again and press “**Enter**”, scroll down to “**Modem**” and press “**Enter**”, then scroll down to “**GSM TEST**” and press “**Enter**”, watch the display for a successful connection. You should see the parameters below flash back and forth and will change when it finds a signal, this might take up to 15 minutes. Let me know what the values are for below represented by “**?**”.

**NOTE:** If you get the status “**AT+CREG of 3**” (**Registration Denied**) disconnect all power to the control box and report issue to your Aeronet contact

AT+CREG?  
+CREG: 0, **?** OK



and alternates with  
+CSQ: **??**,99 OK



## AT+CREG status:

- 0 - **Not registered**, MT is not currently searching a new operator to register to
- 1 - **Registered**, home network
- 2 - **Not registered**, but MT is currently searching a new operator to register to
- 3 - **Registration denied**
- 4 - **Unknown**
- 5 - **Registered, roaming**

## +CSQ status:

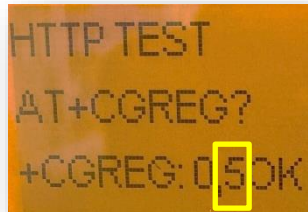
- 2 - 9 **Marginal**
- 10 - 14 **OK**
- 15 - 19 **Good**
- 20 - 30 **Excellent**
- 99 **Not known or not detectable**

# HTTP TEST

Scroll down to “**Cimel**” again and press “**Enter**”, scroll down to “**Modem**” and press “**Enter**”, then scroll down to “**HTTP TEST**” and press “**Enter**”, many modem diagnostic commands will appear, however few are notably important. The parameters below flash back and forth quickly and will change when it finds a signal, this might take up to 15 minutes. Let me know what the values are for below represented by “?”.

**NOTE:** If you get the status “**AT+CREG of 3**” (**Registration Denied**) disconnect all power to the control box and report issue to your Aeronet contact

AT+CREG?  
+CGREG: 0, **?** OK

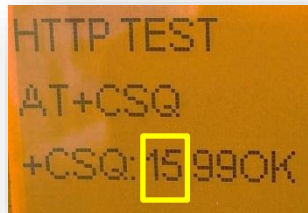


```
HTTP TEST
AT+CGREG?
+CGREG: 0, 5 OK
```

**AT+CREG status:**

- 0 - **Not registered**, but currently searching still
- 1 - **Registered**, home network
- 2 - **Not registered**, but currently searching still
- 3 - **Registration denied**
- 4 - **Unknown**
- 5 - **Registered, roaming**

and alternates with  
+CSQ: **??**, 99 OK

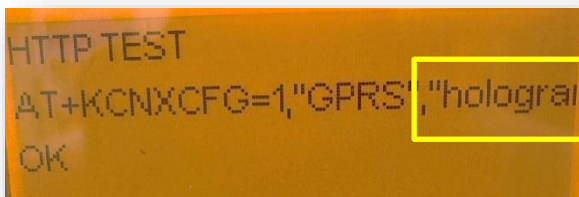


```
HTTP TEST
AT+CSQ
+CSQ: 15, 99 OK
```

**+CSQ status:**

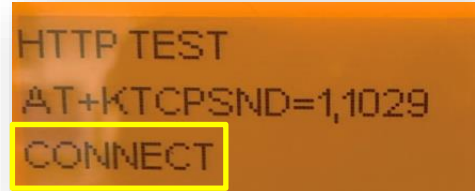
- 2 - 9 **Marginal**
- 10 - 14 **OK**
- 15 - 19 **Good**
- 20 - 30 **Excellent**
- 99 **Not known or not detectable**

During the HTTP test, you should see the screen show a connection to the network, in our case it is hologram



```
HTTP TEST
AT+KCNXCFG=1, "GPRS", "hologram"
OK
```

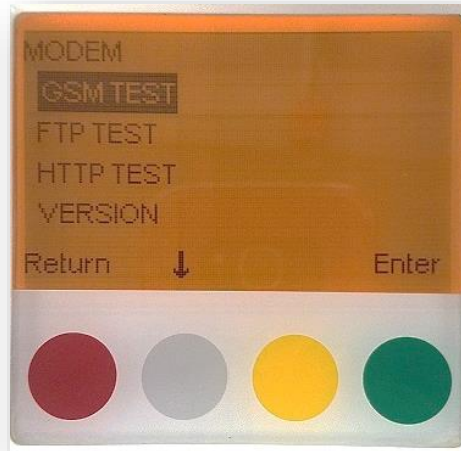
Thereafter, a good sign when the connection has been made between our server and the Cimel you will see CONNECT populate the screen.



```
HTTP TEST
AT+KTCPSND=1, 1029
CONNECT
```

# Checking Network Status

After the HTTP test has completed, scroll down in the MODEM menu until you see Network and Level



## 1) Network:

- 0 - **Not registered**, but currently searching still
- 1 - **Registered**, home network
- 2 - **Not registered**, but currently searching still
- 3 - **Registration denied**
- 4 - **Unknown**
- 5 - **Registered, roaming**

## 2) Signal Level:

- 2 - 9 **Marginal**
- 10 - 14 **OK**
- 15 - 19 **Good**
- 20 - 30 **Excellent**
- 99 **Not known or not detectable**

